

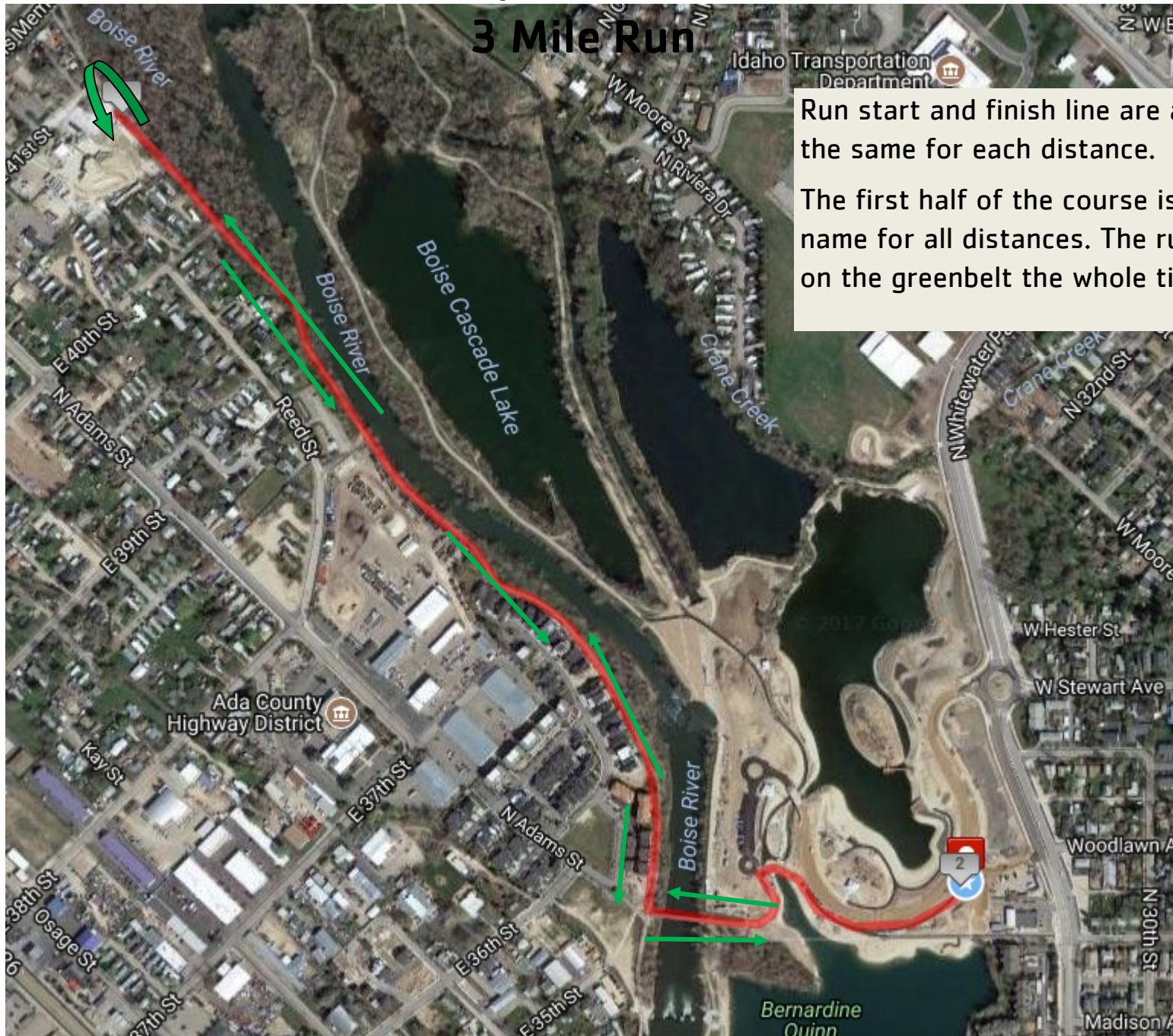
# Y Not Tri Super Sprint Run Course

## 1 Mile Run



# Y Not Tri Sprint Run Course

## 3 Mile Run

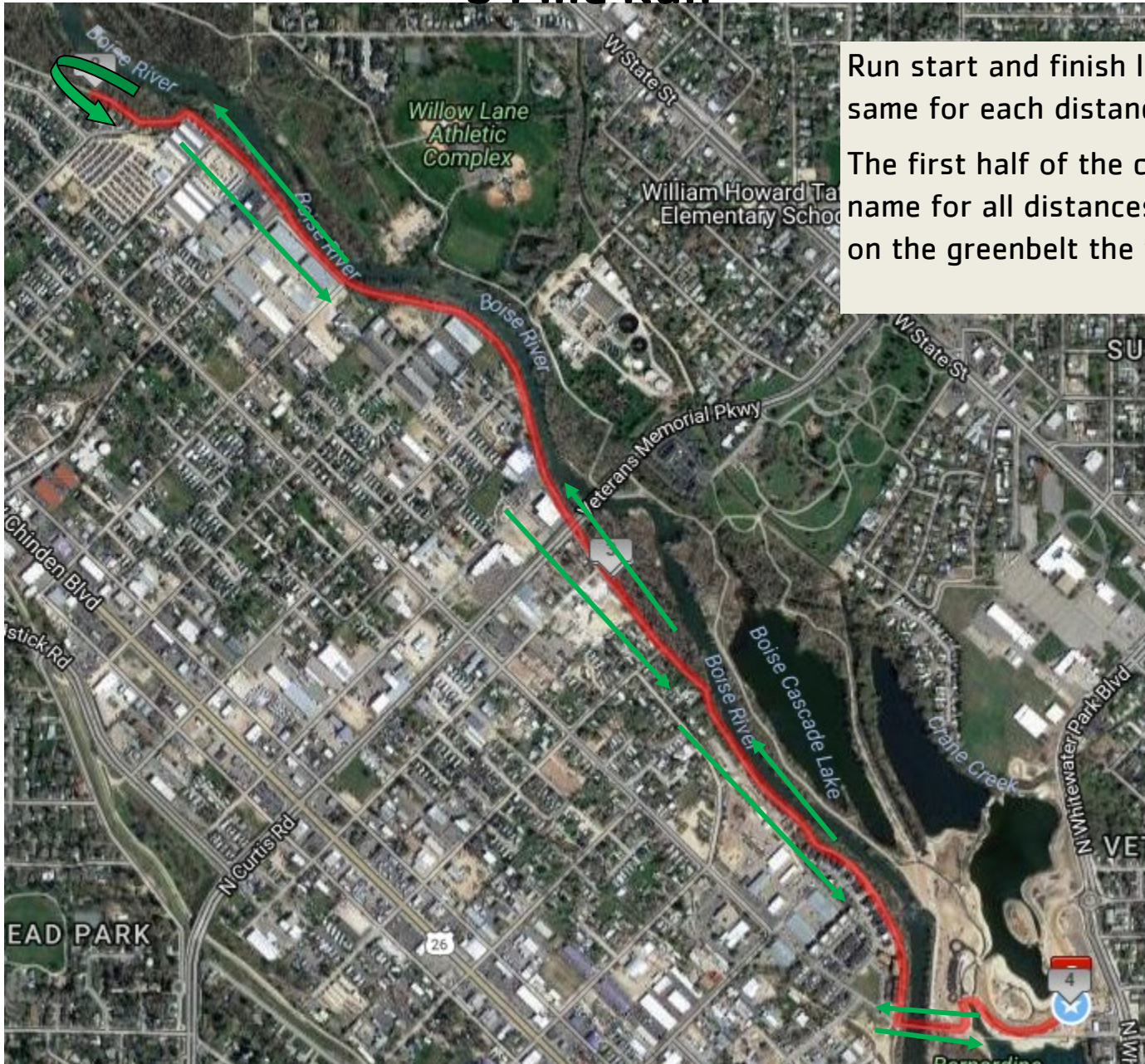


Run start and finish line are all the same for each distance.

The first half of the course is the name for all distances. The run is on the greenbelt the whole time.

# Y Not Tri Sprint Run Course

## 3 Mile Run



Run start and finish line are all the same for each distance.

The first half of the course is the name for all distances. The run is on the greenbelt the whole time.