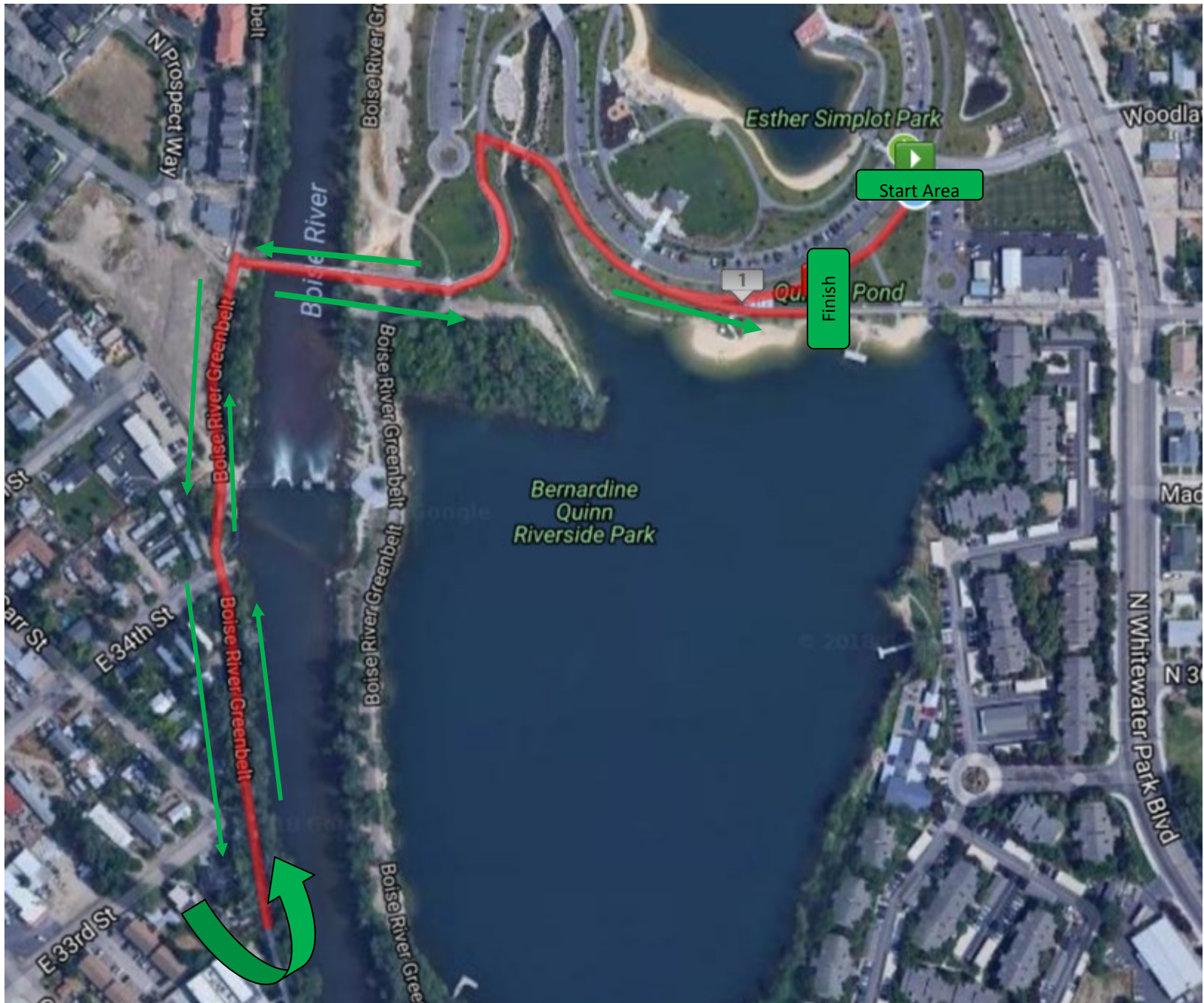
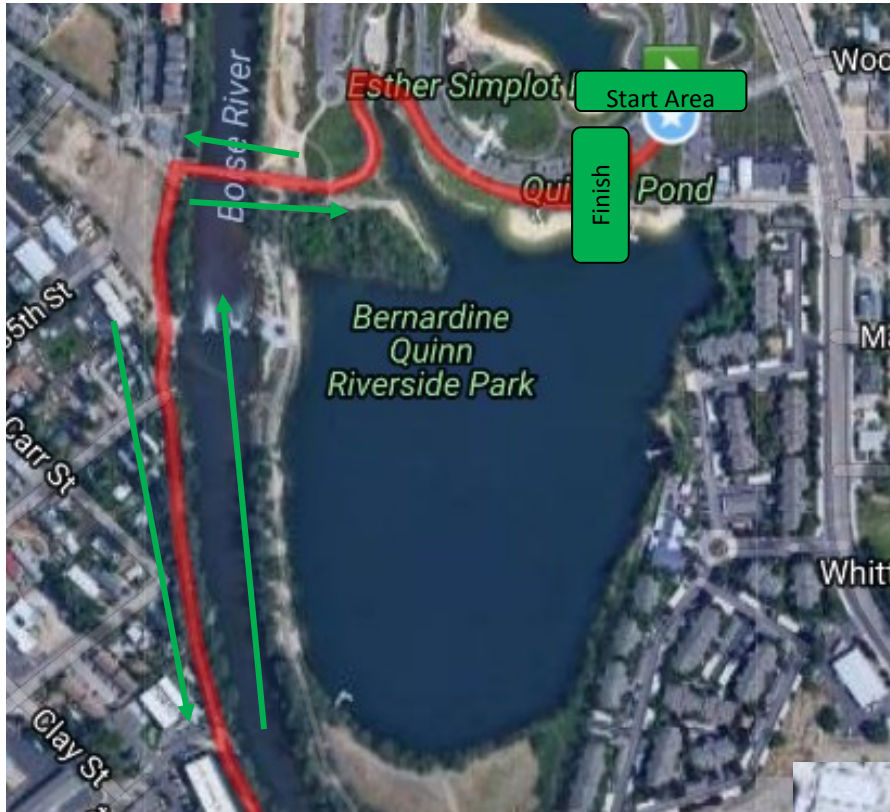


Y Not Tri Super Sprint Run Course 1 Mile Run



Y Not Tri Sprint Run Course 2 Mile Run



The start and finish area is the same for all run distances. The turn around points are what make them different.

Run through Esther Simplot Park heading west, cross the bridge and turn left onto the green-belt.

Sprint Course turns around at the overpass for the Connector.



Y Not Tri Sprint Run Course 4 Mile Run



The start and finish area is the same for all run distances. The turn around points are what make them different.

Run through Esther Simplot Park heading west, cross the bridge and turn left onto the greenbelt.

The Double Sprint turns around in Ann Morrison Park.